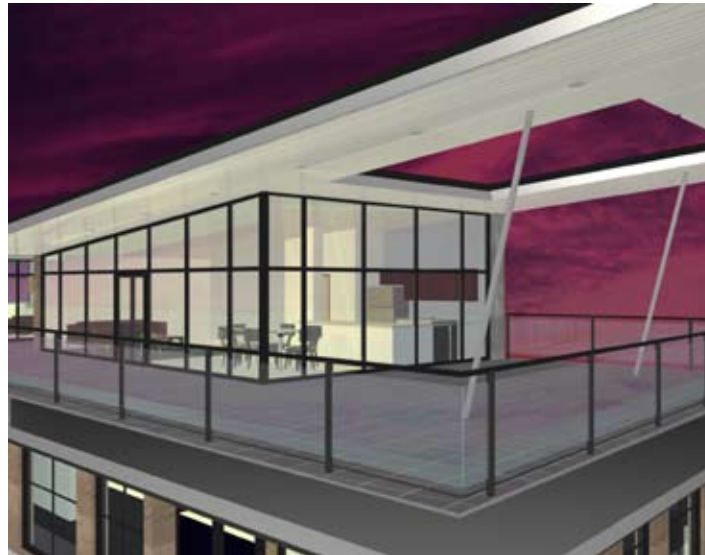


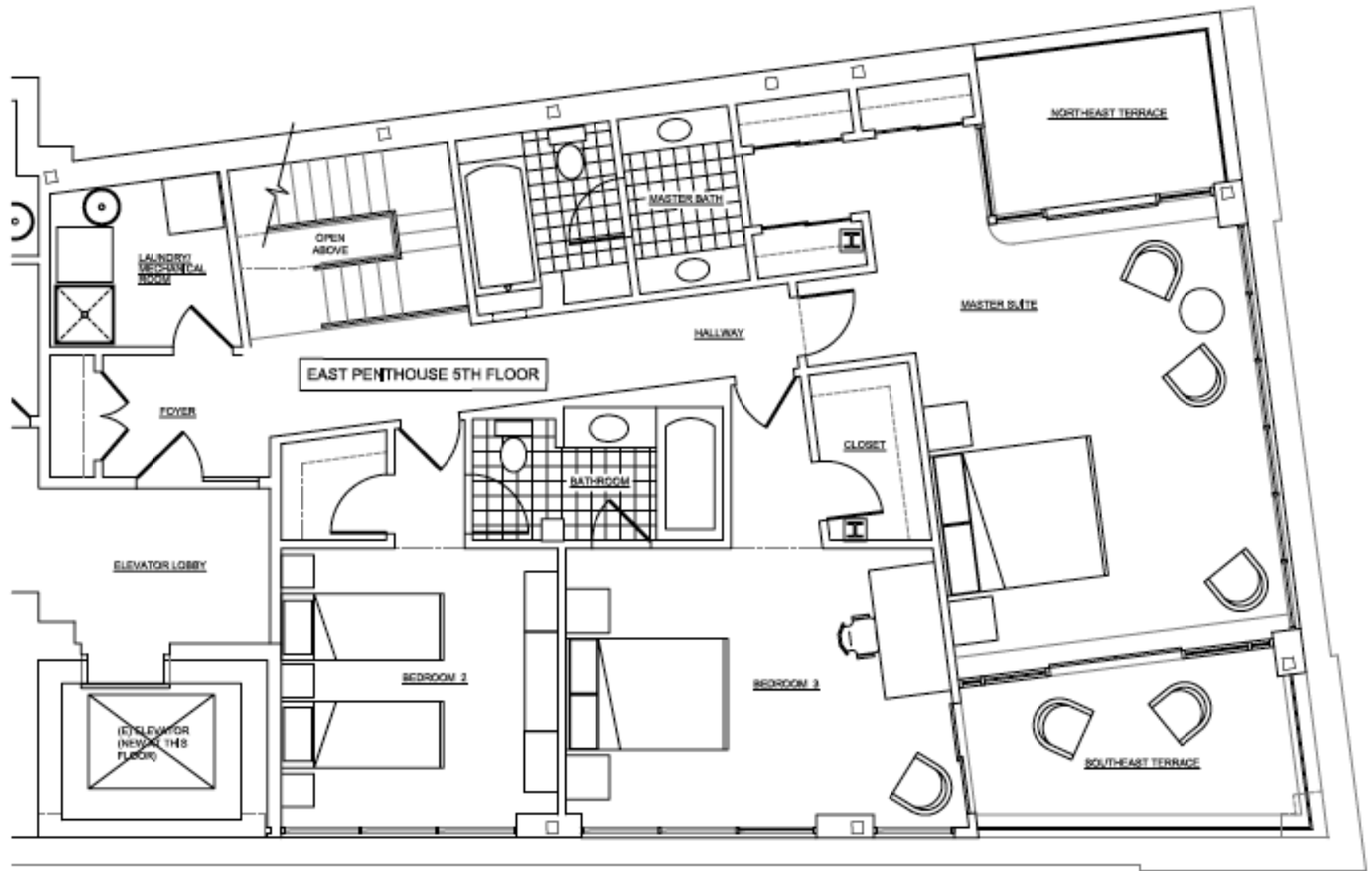
EAST PENTHOUSE 2100 SF



- One of the most, if not the most, distinguishable residences in the City. The dramatic and dynamic design of the 201 Green penthouses will be recognizable by the hundreds of thousands of commuters each day riding on I-95, 676 or the EL.
- 3 Bedroom, 2 ½ bath bi-level floor plan.
- Unparalleled city, riverfront and bridge views.
- Glass enclosed 6th floor kitchen, living and dining areas.
- 1200 sf private roof terrace with Summer Kitchen.
- Sleek modern European style kitchen cabinets with Miele kitchen appliance suite.
- Master Suite with private 5th floor roof terrace and separate 5th floor roof terrace shared with smaller bed room.
- 12' ceiling heights at 5th floor.
- All surfaces commensurate with this prestigious residence.
- Customization of finishes possible.

All square footages are approximate and for reference purposes only. Prices and availability are subject to change without notice for all units. Renderings are the conceptions of the artist.

The developer expressly reserves the right to make modifications, revisions, and changes it deems desirable in its sole and absolute discretion without notice.



EAST PENTHOUSE 2100 SF

